

VERDI plays the TRUMPET



11 Soli für Trompete und Klavier
bearbeitet von Georg Zwettler

Partitur



VERDI plays the TRUMPET

Partitur

Inhaltsverzeichnis

	Seite
Preludio <i>aus der Oper „La Traviata“</i>	4
Trinklied „Brindisi“ <i>aus der Oper „La Traviata“</i>	8
Un di, felice, eterea <i>Arie aus der Oper „La Traviata“</i>	14
Oh mio rimorso! <i>Arie aus der Oper „La Traviata“</i>	17
Di provenza il mar, il suol <i>Arie aus der Oper „La Traviata“</i>	21
Addio del passato <i>Arie aus der Oper „La Traviata“</i>	24
Parigi, o cara <i>Arie aus der Oper „La Traviata“</i>	26
Caro nome <i>Arie aus der Oper „Rigoletto“</i>	31
La donna e mobile <i>Arie aus der Oper „Rigoletto“</i>	37
Gefangenenchor <i>aus der Oper „Nabucco“</i>	40
Gloria all Egitto Triumphmarsch <i>aus der Oper „Aida“</i>	47

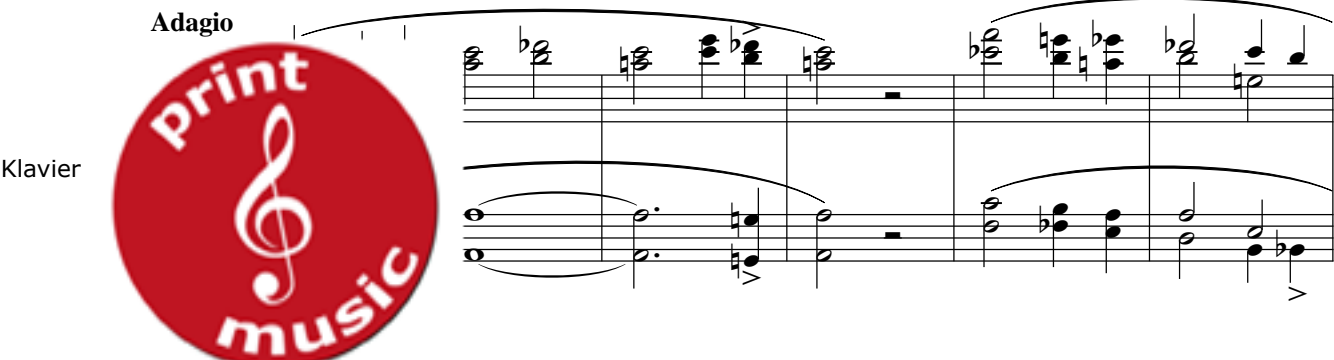
Preludio

Vorspiel zur Oper "La Traviata"

Giuseppe Verdi
arr.: Georg Zwettler

Adagio

Klavier



www.printmusic.at



www.printmusic.at




www.printmusic.at

Trp.

con espressione

mf

pp



www.printmusic.at

Trp.

21

print music

Trp.

www.printmusic.at

p

25

print music

Trp.

p

www.printmusic.at

29

print music

Trp.

31

print music

www.printmusic.at

Trp.

f

pp

33

print music

Trp.

www.printmusic.at

35

print music

Trp.

www.printmusic.at

37

print music

Trp.

f

pp

38

www.printmusic.at

print music

Trp.

40

f *pp*

Trp.

42

www.printmusic.at

44

www.printmusic.at

46

allarg. *dim.*



www.printmusic.at

Trinklied

Brindisi aus der Oper "La Traviata"

Giuseppe Verdi
arr.: Georg Zwettler

Allegretto

Klavier



www.printmusic.at



www.printmusic.at

Trp.



www.printmusic.at

Trp.

32

print
music

Trp.

www.printmusic.at

42

print
music

Trp.

www.printmusic.at

53

print
music

Trp.

pp

63

pp

f

www.printmusic.at

Trp.

71

p

Trp.

www.printmusic.at

78

pp

Trp.

www.printmusic.at

88

Trp.

99

www.printmusic.at

Trp.

108

print
music

Trp.

www.printmusic.at

pp

118

pp

mf

print
music

Trp.

www.printmusic.at

128

f

mf

print
music

Trp.

137

f

pp

pp

print
music

www.printmusic.at

Trp.

145

print
music

Trp.

www.printmusic.at

pp

155

print
music

Trp.

www.printmusic.at

cresc. poco a poco

164

cresc. poco a poco

print
music

Trp.

www.printmusic.at

J

174

JJ

print
music

Trp.

182

www.printmusic.at

Trp.

190

www.printmusic.at



Un di, felice, eterea

aus der Oper "La Traviata"

Giuseppe Verdi
arr.: Georg Zwettler

Andantino

Trompete



Klavier

www.printmusic.at

Trp.



www.printmusic.at

Trp.



www.printmusic.at

Trp.

22

www.printmusic.at

Trp.

32

pp

p

8^{va}

www.printmusic.at

Trp.

38

(8^{va})

pp

p

www.printmusic.at

Trp.

44

8^{va}

www.printmusic.at

Trp.

50

print music

www.printmusic.at

Trp.

57

print music

www.printmusic.at

Trp.

61

print music

Trp.

66

8va

print music

www.printmusic.at

Oh mio rimorso!

aus der Oper "La Traviata"

Giuseppe Verdi
arr.: Georg Zwettler

Allegro

Trompete

Klavier

www.printmusic.at

Trp.

www.printmusic.at

Trp.

www.printmusic.at

Trp.

10

Trp.

www.printmusic.at

13

Trp.

www.printmusic.at

16

Trp.

19

www.printmusic.at

Trp.

22

Trp.

www.printmusic.at

f *ff*

26

ff *ff*

Trp.

www.printmusic.at

30

Trp.

www.printmusic.at

34

Trp.

38

print music

www.printmusic.at

Trp.

41

print music

www.printmusic.at

Trp.

45

print music



www.printmusic.at

Di provenza il mar, il suol

aus der Oper "La Traviata"

Giuseppe Verdi
arr.: Georg Zwettler

Klavier



Two staves of piano accompaniment. The top staff contains chords and the bottom staff contains a bass line. The music is in a minor key and features a steady rhythmic accompaniment.

Trp.

www.printmusic.at

p

Two staves of piano accompaniment. The top staff contains chords and the bottom staff contains a bass line. The music is in a minor key and features a steady rhythmic accompaniment. The top staff includes the markings "allarg." and "morendo".

Trp.

pp



Two staves of piano accompaniment. The top staff contains chords and the bottom staff contains a bass line. The music is in a minor key and features a steady rhythmic accompaniment. The top staff includes the marking "pp".

Trp.

pp



Two staves of piano accompaniment. The top staff contains chords and the bottom staff contains a bass line. The music is in a minor key and features a steady rhythmic accompaniment. The top staff includes the marking "pp".

con espress.

Trp.

pp *f*

17



www.printmusic.at

Trp.

pp

21

pp *p*



www.printmusic.at

Trp.

25

allarg. *morendo*



Trp.

pp

29

pp

www.printmusic.at



Trp.

pp *pp*

33

Trp.

www.printmusic.at

pp *f* *pp* *pp*

38

Trp.

www.printmusic.at

allarg. e dim.

43

Trp.

www.printmusic.at

morendo

46

Addio del passato

aus der Oper "La Traviata"

Giuseppe Verdi
arr.: Georg Zwettler

Trompete

legato e dolce

pp

Klavier

pp



www.printmusic.at

Detailed description: This block contains the first system of the score. It features a Trompete (Trumpet) part on a single staff and a Klavier (Piano) part on two staves. The Trumpet part begins with a rest followed by a melodic line starting on a half note G4, marked *legato e dolce* and *pp*. The Piano part consists of a rhythmic accompaniment of eighth notes in the right hand and a bass line in the left hand, also marked *pp*. A large red circular logo with a white treble clef and the text 'print music' is overlaid on the left side. The website 'www.printmusic.at' is printed below the piano part.

Trp.

5



www.printmusic.at

Detailed description: This block contains the second system of the score. It features a Trp. (Trumpet) part on a single staff and a Klavier (Piano) part on two staves. The Trumpet part continues the melodic line from the previous system, marked with accents. The Piano part continues the accompaniment. A large red circular logo with a white treble clef and the text 'print music' is overlaid in the center. The website 'www.printmusic.at' is printed below the piano part.

Trp.

con espress.

11

dolciss.



www.printmusic.at

Detailed description: This block contains the third system of the score. It features a Trp. (Trumpet) part on a single staff and a Klavier (Piano) part on two staves. The Trumpet part is marked *con espress.* and features a melodic line with slurs and accents. The Piano part is marked *dolciss.* and features a complex accompaniment with many chords. A large red circular logo with a white treble clef and the text 'print music' is overlaid on the right side. The website 'www.printmusic.at' is printed below the piano part.

Trp.

18

pp

Trp.

www.printmusic.at

con forza

pp

24

pp legg.

pp

Trp.

www.printmusic.at

p

29

p

p

Trp.

allarg. e morendo

34

allarg. e morendo

pp

pp

Parigi, o cara

aus der Oper "La Traviata"

Giuseppe Verdi
arr.: Georg Zwettler

Andante mosso

Trompete

dolciss.
p

Klavier

www.printmusic.at

Trp.

10

www.printmusic.at

Trp.

f

20

f

www.printmusic.at

Trp.

2. *legg. e stent.*

pp

28

pp

Trp.

www.printmusic.at

33

pp

Trp.

www.printmusic.at

38

pp

Trp.

42

www.printmusic.at

pp

Trp.

47

pp

p

pp

Trp.

www.printmusic.at

pp

53

pp

p

pp

Trp.

www.printmusic.at

57

pp

p

pp

Trp.

www.printmusic.at

62

pp

p

pp

Trp.

67

pp

www.printmusic.at

Trp.

72

pp



Trp.

Cadenza

75

Cadenza

ppp

www.printmusic.at

Trp.

76

pp

www.printmusic.at

Trp.

77

allarg.

www.printmusic.at

www.printmusic.at

www.printmusic.at

Caro nome

aus der Oper "Rigoletto"

Giuseppe Verdi
arr.: Georg Zwettler

dolciss.

Klavier



www.printmusic.at

5



Trp.



p

8



p

www.printmusic.at

Trp.



12



www.printmusic.at

Trp.

16

print
music

Trp.

www.printmusic.at

20

print
music

Trp.

www.printmusic.at

24

print
music

Trp.

28

print
music

www.printmusic.at

Trp.

31

print
music

www.printmusic.at

Trp.

34

print
music

Trp.

36

dolce

print
music

www.printmusic.at

Trp.

38

print
music

www.printmusic.at

Trp.

41

Trp.

www.printmusic.at

44

Trp.

www.printmusic.at

46

Trp.

48

Trp.

50

pp

p

www.printmusic.at

Trp.

52

leggiero

p

Trp.

56

p

Trp.

59

8va

p

Trp.

64

8va

p

www.printmusic.at

Trp.

68

pp

www.printmusic.at

Trp.

72

ppp

www.printmusic.at



La donna e mobile

aus der Oper "Rigoletto"

Giuseppe Verdi
arr.: Georg Zwettler

Allegretto

Λ Λ Λ

Klavier



Musical score for the first system, featuring piano accompaniment and a trumpet part. The piano part includes a dynamic marking *p*. The trumpet part includes a dynamic marking *p*. The score is in 3/4 time and B-flat major.

Trp.

www.printmusic.at

p

Musical score for the second system, featuring piano accompaniment and a trumpet part. The piano part includes a dynamic marking *pp*. The score is in 3/4 time and B-flat major.



Trp.

p

www.printmusic.at

Musical score for the third system, featuring piano accompaniment and a trumpet part. The piano part includes a dynamic marking *p*. The score is in 3/4 time and B-flat major.

Trp.

f > *pp*³

Musical score for the fourth system, featuring piano accompaniment and a trumpet part. The piano part includes dynamic markings *f* and *pp*. The score is in 3/4 time and B-flat major.



www.printmusic.at

Trp.

38

con forza
f
fine ad lib.



3 3 3 3

f
ff
fine ad lib.

www.printmusic.at

Detailed description: This system contains the first staff (Trumpet) and the first two staves of the piano accompaniment. The trumpet part starts with a long note, followed by a melodic line with a fermata. The piano accompaniment features a complex rhythmic pattern with triplets and chords. The music is marked with dynamics like *f* and *ff*, and includes performance instructions like *con forza* and *fine ad lib.*. A large red circular logo with a white treble clef and the text 'print music' is overlaid on the piano staves.

45

www.printmusic.at

Detailed description: This system shows the continuation of the piano accompaniment. The right hand plays a series of chords and eighth notes, while the left hand provides a steady bass line with chords. The music is marked with *f* and *ff*. A large red circular logo with a white treble clef and the text 'print music' is overlaid on the right side of the system.

53

dim.

www.printmusic.at

Detailed description: This system continues the piano accompaniment. The right hand has a melodic line with slurs, and the left hand has a rhythmic accompaniment. The music is marked with *dim.* and *p*. A large red circular logo with a white treble clef and the text 'print music' is overlaid on the right side of the system.

59

p

www.printmusic.at

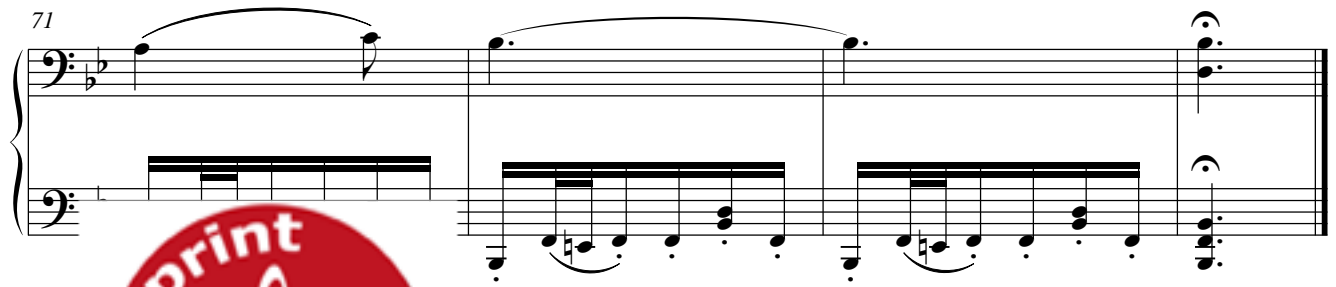
Detailed description: This system continues the piano accompaniment. The right hand has a melodic line with slurs, and the left hand has a rhythmic accompaniment. The music is marked with *p*. A large red circular logo with a white treble clef and the text 'print music' is overlaid on the right side of the system.

65

morendo

www.printmusic.at

Detailed description: This system continues the piano accompaniment. The right hand has a melodic line with slurs, and the left hand has a rhythmic accompaniment. The music is marked with *morendo*. A large red circular logo with a white treble clef and the text 'print music' is overlaid on the right side of the system.



www.printmusic.at



www.printmusic.at



www.printmusic.at

Gefangenenchor

aus der Oper "Nabucco"

Giuseppe Verdi
arr.: Georg Zwettler

Largo

Klavier



www.printmusic.at



www.printmusic.at

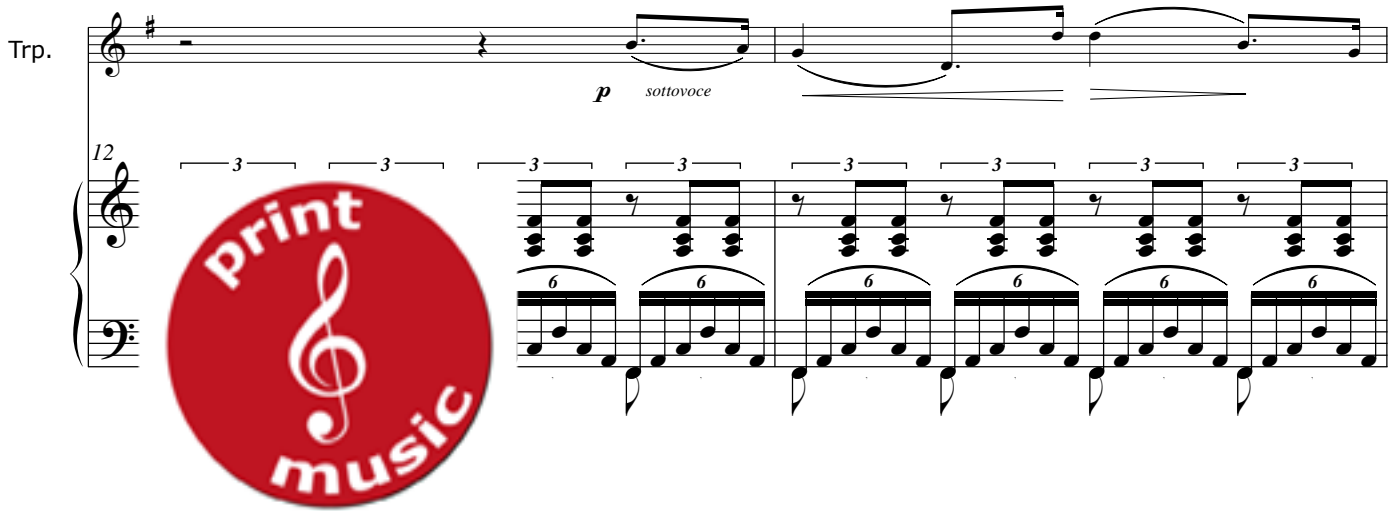


www.printmusic.at

Trp.

p *sottovoce*

12



www.printmusic.at

Trp.

14



Trp.

www.printmusic.at

16



Trp.

18

www.printmusic.at



Trp.

18 19 20 21

print music

www.printmusic.at

Trp.

22 23

print music

www.printmusic.at

Trp.

24 25

print music

Trp.

26 27 28 29

print music

www.printmusic.at

Trp.

ff

28

www.printmusic.at

Trp.

p

30

www.printmusic.at

Trp.

ff

32

www.printmusic.at

Trp.

p

34

www.printmusic.at

Trp.

43

www.printmusic.at

Trp.

44

www.printmusic.at

Trp.

45



www.printmusic.at

Trp.

46

print music

www.printmusic.at

Trp.

48

print music

www.printmusic.at



www.printmusic.at

Gloria all Egitto

Triumphmarsch aus der Oper "Aida"

Giuseppe Verdi
arr.: Georg Zwettler

Allegro maestoso

Trompete



First staff of music for Trompete, measures 1-4. It features a melodic line with triplet markings (3) and a final whole note.

Klavier

www.printmusic.at

Second and third staves of music for Klavier, measures 1-4. The second staff is mostly empty, while the third staff contains a few notes.

Trp.

First staff of music for Trp. (Trumpet), measures 5-8. It features a melodic line with triplet markings (3).

Second and third staves of music for Klavier, measures 5-8. The second staff is marked *mf*. It features a rhythmic accompaniment.



Fourth and fifth staves of music for Trp. (Trumpet), measures 5-8. It features a melodic line with triplet markings (3).

www.printmusic.at

Trp.

First staff of music for Trp. (Trumpet), measures 9-12. It features a melodic line with triplet markings (3).

Second and third staves of music for Klavier, measures 9-12. It features a rhythmic accompaniment.



Fourth and fifth staves of music for Trp. (Trumpet), measures 9-12. It features a melodic line with triplet markings (3).

Second and third staves of music for Klavier, measures 13-16. The second staff is marked *cresc. e string. poco a poco*. It features a rhythmic accompaniment.

www.printmusic.at

17

www.printmusic.at

21

www.printmusic.at

Trp.

ff

25

www.printmusic.at

Trp.

ff

31

www.printmusic.at

Trp.

f

36

www.printmusic.at

Trp.

40

cresc. e string. poco a poco

44

www.printmusic.at

48

cantabile

Trp.

www.printmusic.at

p

52

Trp.

56

www.printmusic.at

Trp.

61

Trp.

www.printmusic.at

cresc.

65

Trp.

69

www.printmusic.at

f

74

f

79

www.printmusic.at

84

ff



Trp.

mf

88

mf

www.printmusic.at

Trp.

92

mf



www.printmusic.at

Trp.

96

p



Trp.

100

p

www.printmusic.at

Trp.

mf

104

mf

Trp.

www.printmusic.at

108

Trp.

ff

www.printmusic.at

112

ff

Trp.

116

www.printmusic.at

Trp.

120

www.printmusic.at

Trp.

123

www.printmusic.at

Trp.

127

www.printmusic.at

Trp.

131

www.printmusic.at

Trp. *ff*

135



www.printmusic.at

Detailed description: This system contains the first two staves of music. The top staff is for the Trumpet (Trp.) and begins with a fortissimo (*ff*) dynamic. The bottom staff is for the piano, starting at measure 135. A large red circular logo with a white treble clef and the text 'print music' is overlaid on the piano staff. The piano part features complex chordal textures and triplets.

Trp.

140



www.printmusic.at

Piu animato

Detailed description: This system contains the second two staves of music. The top staff is for the Trumpet (Trp.) and the bottom staff is for the piano, starting at measure 140. A second large red circular logo with a white treble clef and the text 'print music' is overlaid on the piano staff. The piano part continues with complex textures and triplets. The tempo marking *Piu animato* is placed above the piano staff.

Trp.

144

mf

Piu animato



www.printmusic.at

147

Detailed description: This system contains the third two staves of music. The top staff is for the Trumpet (Trp.) and the bottom staff is for the piano, starting at measure 144. A third large red circular logo with a white treble clef and the text 'print music' is overlaid on the piano staff. The piano part features a prominent triplet pattern in the bass line. The tempo marking *Piu animato* is placed above the piano staff, and the dynamic *mf* is placed below the piano staff. The system concludes at measure 147.

150

print music

154

www.printmusic.at

Trp.

Tempo primo

158

ff

ff

Tempo primo

print music

Trp.

163

www.printmusic.at

Trp.

167

print music

www.printmusic.at

Trp.

171

www.printmusic.at

Trp.

iu animato

Piu animato

175

www.printmusic.at

Trp.

www.printmusic.at

179

Trp.

183

www.printmusic.at

Trp.

186

www.printmusic.at

Trp.

188

www.printmusic.at

Trp.

191

www.printmusic.at

